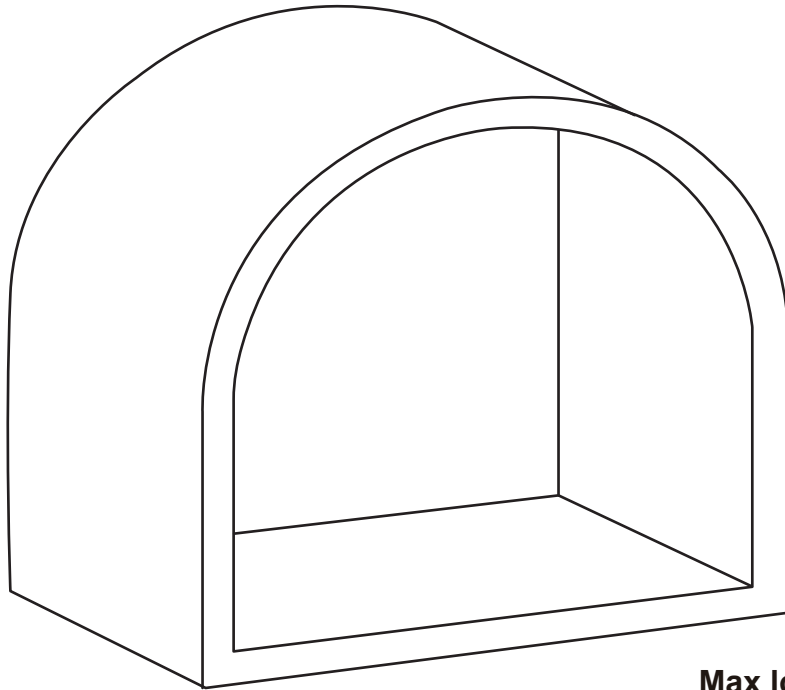


# living & co.

## L&C ARCH CUBBY SHELF



**Max loading: 3 kgs**

### **Care Instructions:**

- Wipe clean with a soft damp or dry cloth. Never clean with chemical or abrasive cleaners.
- This package contains small parts and sharp points, keep away from children and babies until adult assembly is complete.

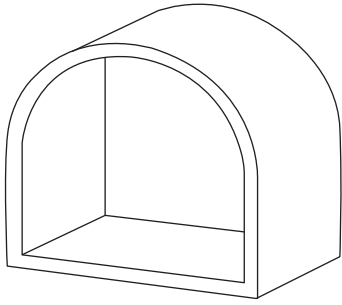
### **Installation:**

- 2 people required.
- Before drilling into the wall location please ensure no live wires or water pipes are hidden or in the way of the installation
- Hold the shelf up where you want to hang it. You may need to centre it on the wall using a tape measure.
- Ensure to measure the correct distance spacing between hooks and mark the wall drill hole locations with a pencil.
- You can use masking tape and place it on the back of the shelf to identify hook locations with a pencil then transfer masking tape to the wall to place drill hole locations to the wall. Additional measurement checks will be required before drilling.
- Recommended tools to use are Drill, tape measure, drill bits, level, and masking tape.

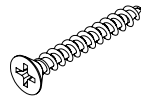
# INSTALLATION MANUAL

# Part Name

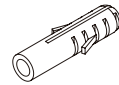
A. x1



B. x2

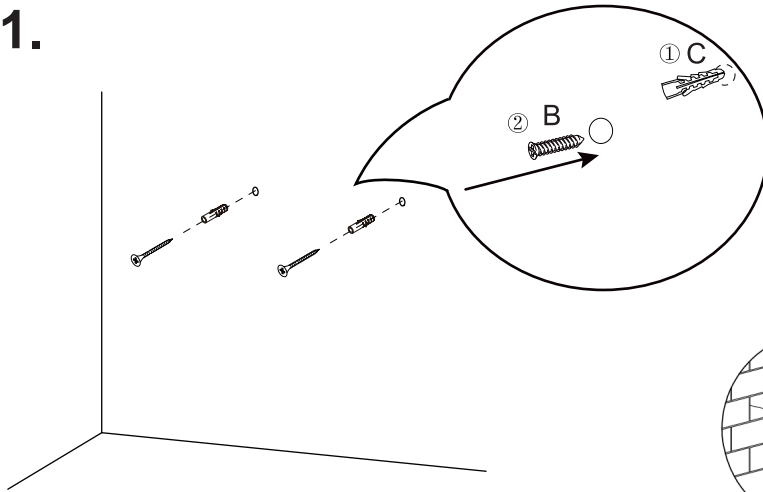


C. x2

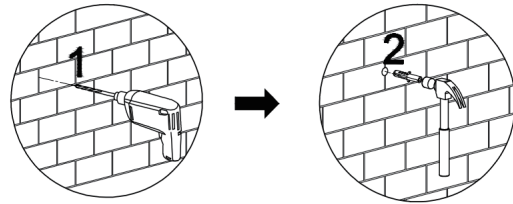


## Assembly

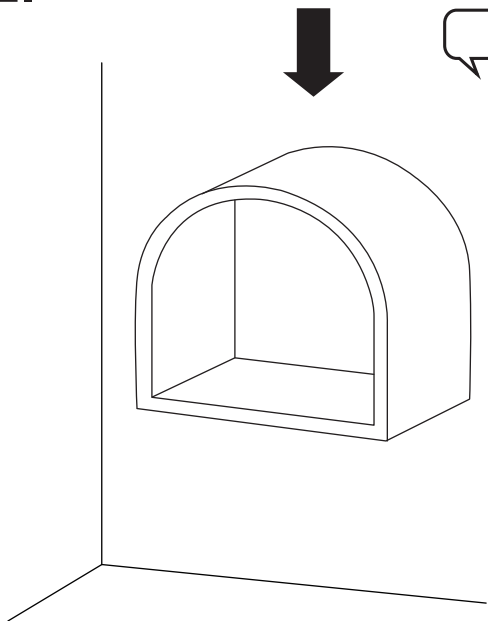
1.



Match drill bit diameter to part C wall plug and drill the 2 mounting hole locations for installation of part C wall plug.



2.



Install x2 screws part B 80% into the wall plugs and allow the screw head to overhang for dispenser hanging placement, adjust screws if required.

